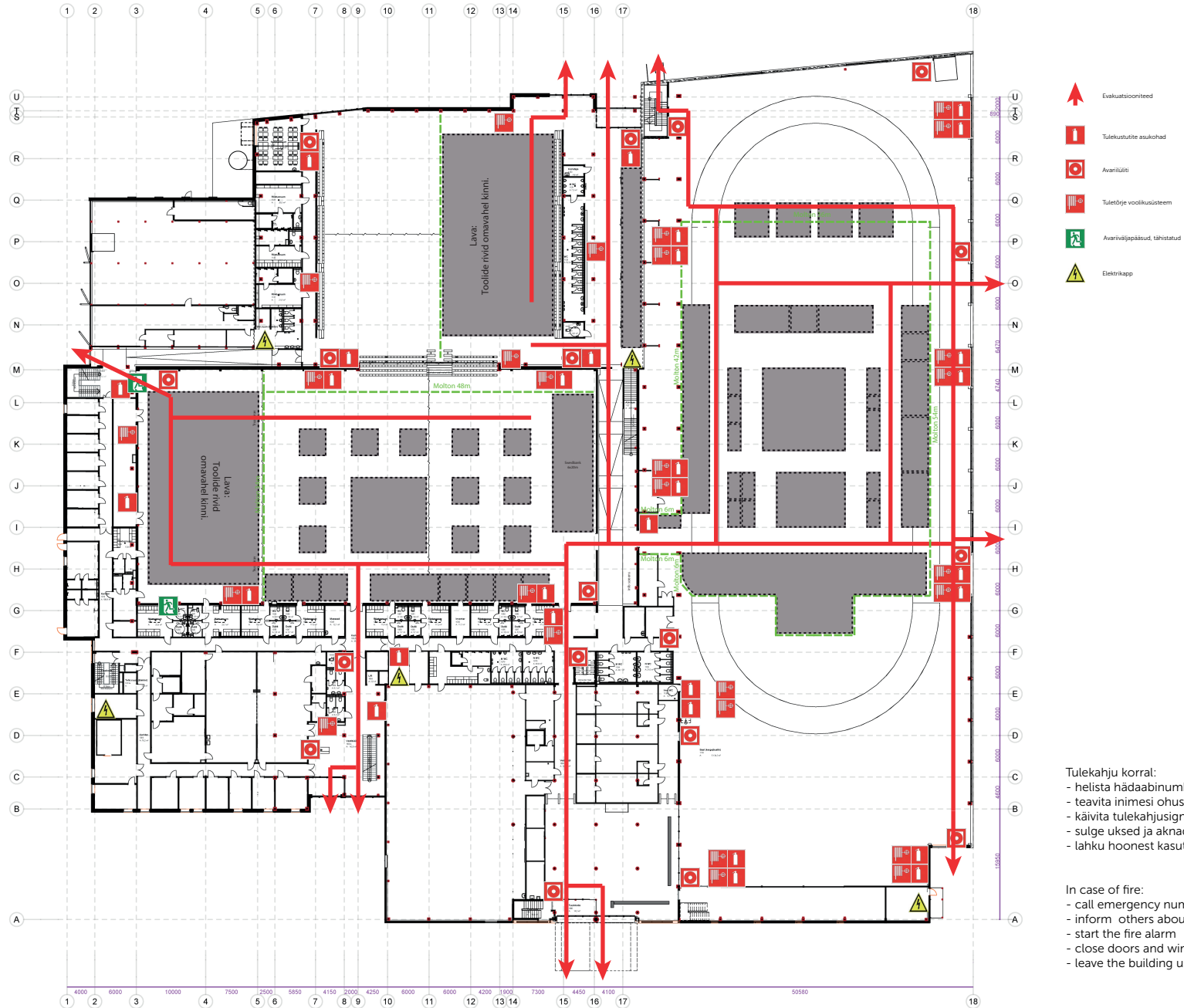


Evacuation Plans



- Tulekahju korral:
- helista hädaabinumbrile 112
 - teavita inimesi ohust
 - käivita tulekahjusignalisatsioon
 - sulge ukсед ja aknad
 - lahu hoonest kasutades evakuaatsiooniteed

- In case of fire:
- call emergency number 112
 - inform others about the emergency
 - start the fire alarm
 - close doors and windows
 - leave the building using escape routes